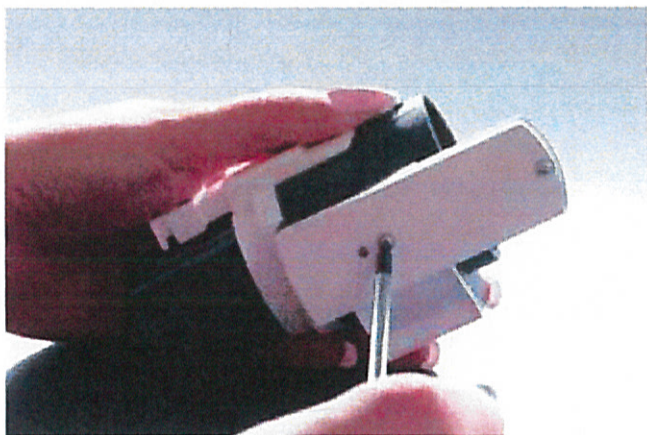


Guide to reprogramming Flisy 2 wireless connectors

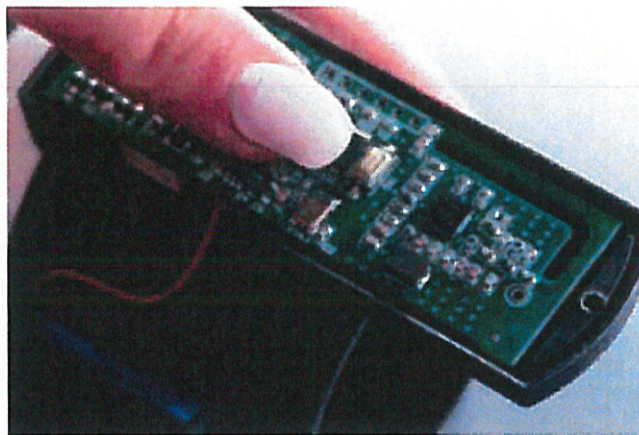
Following these simple steps, you can reprogram and associate your Flisy 2 wireless connectors.



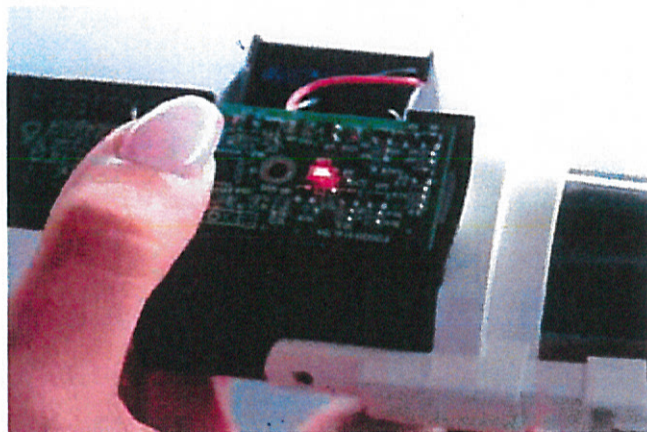
Tools required: star screwdriver.
Estimated time: 2 min.



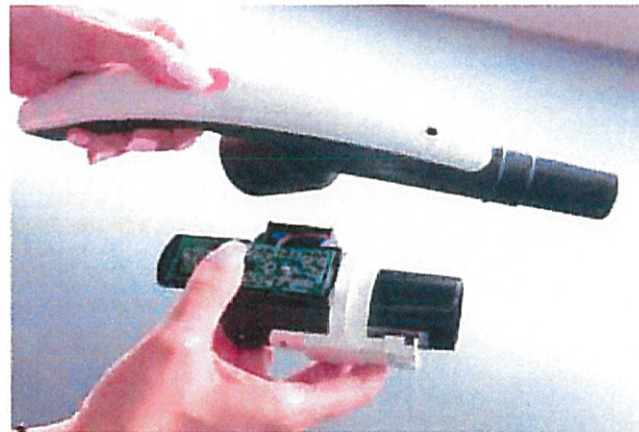
1. Open the door of the Flisy 2 receiver module by unscrewing the screws with a star screwdriver.



2. Press and hold the button on the receiving card.



3. Wait for the red LED flashes and keep the button pressed.



4. When the led light becomes fixed, press the button on the handle and wait for the red led light to switch off. Release both buttons to complete the reprogramming.